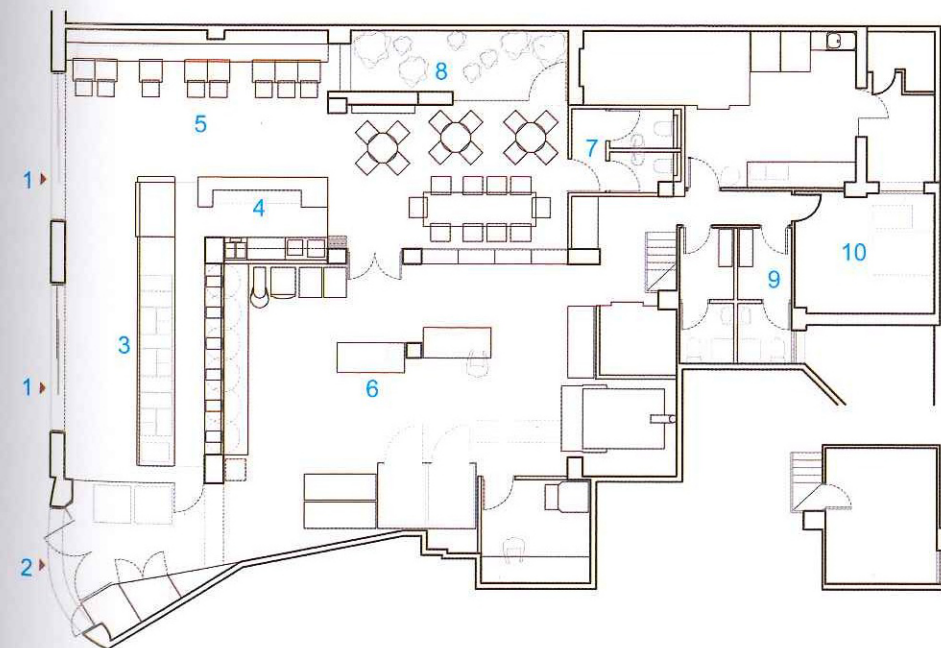


The Mill's Workshop

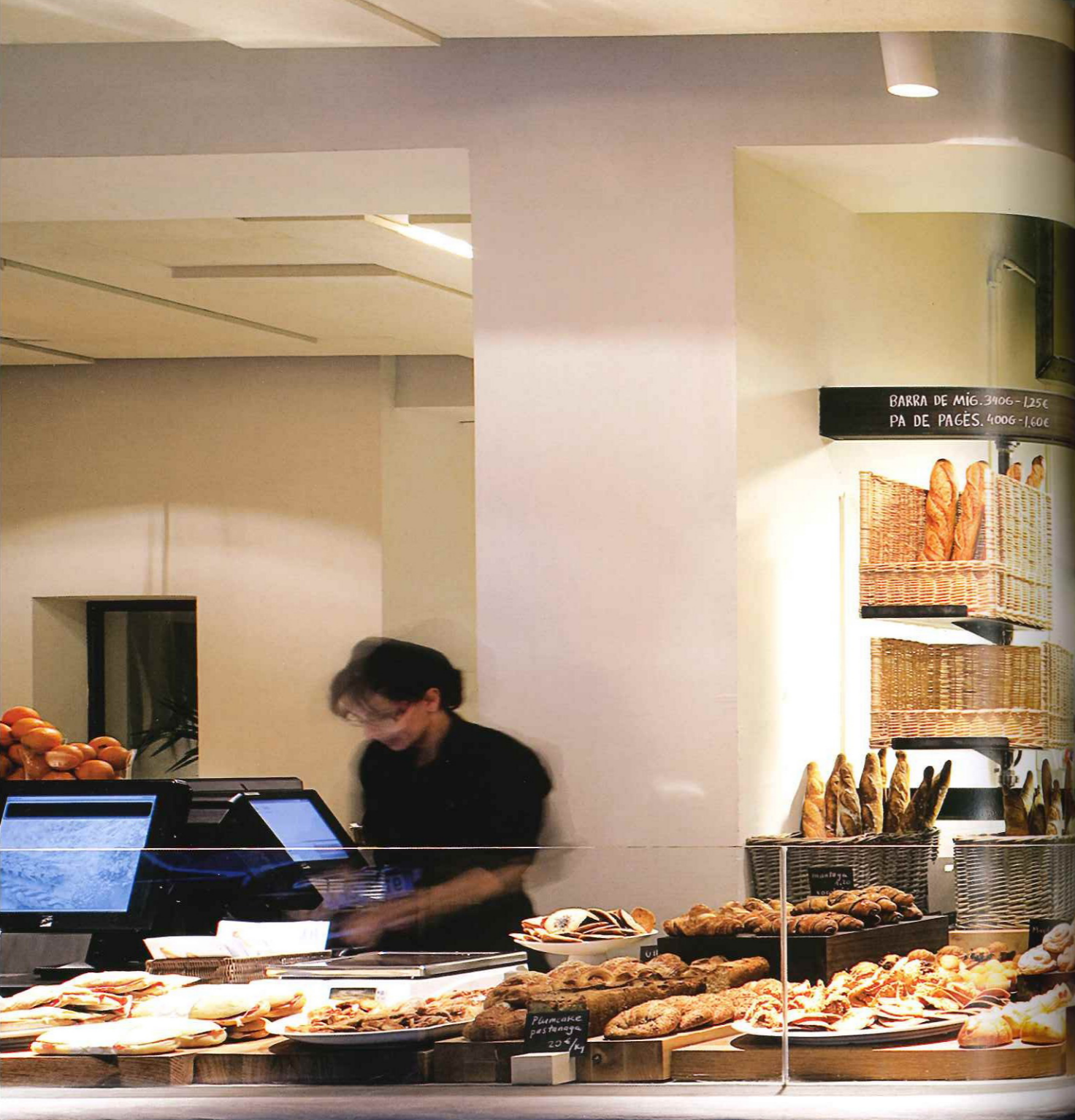
Designer: Sandra Tarruella Interioristas
Location: Manuel de Falla, Spain
Project area: 260m²
Project year: 2010
Photographs: Jordi Sarrà

The project consisted on opening the workshop to the shop, and the shop to the street. By establishing a visual connection between all spaces, customers could realise and understand the entire manufacturing process and all the steps it entailed, the ingredients and the traditional process that had been gradually hidden away in the back of the shop. The exhibition of different types of bread serves as the backdrop that unites the manufacturing and selling areas. This screen, made out of several turning wicker baskets supported by an iron structure, is the leading feature of the whole space and the link between the two areas.

The jointless cement counter, which is a visual extension of the floor, is a hefty element that serves as support for a topography of blocks of different woods and sizes, where breads are displayed. The suspended ceiling is finished in whitened cloth and there is a play with different heights, inspired by the linen used for leavening bread dough. The iron panelled frames, functional wooden furniture and bar counter finished in white marble complete the list of materials that dress up the space and create an atmosphere that is sober, refined, and industrially casual.



Floor Plan:
1. Principal access
2. Merchandise access
3. Bread shops
4. Bar cafeteria
5. Tasting area
6. Workshop
7. Bathroom
8. Patio
9. Cloakrooms
10. Storage/Installation





4



5

1. Diversified fresh products on the counter
2. Shopfront along the street - large expanse of glass bringing inside views out
3. The display counter separated from the workshop by a display wall
4. Bar cafeteria emphasizing simple style
5. Tasting area behind workshop
6. Workshop



6